



Elektroenergetické montáže
...building Energy



EEM — Elektroenergetické montáže

Our tradition dating
back to 1920. Joint Stock
Company founded in 2004.



Taking part in
electrification of Slovakia

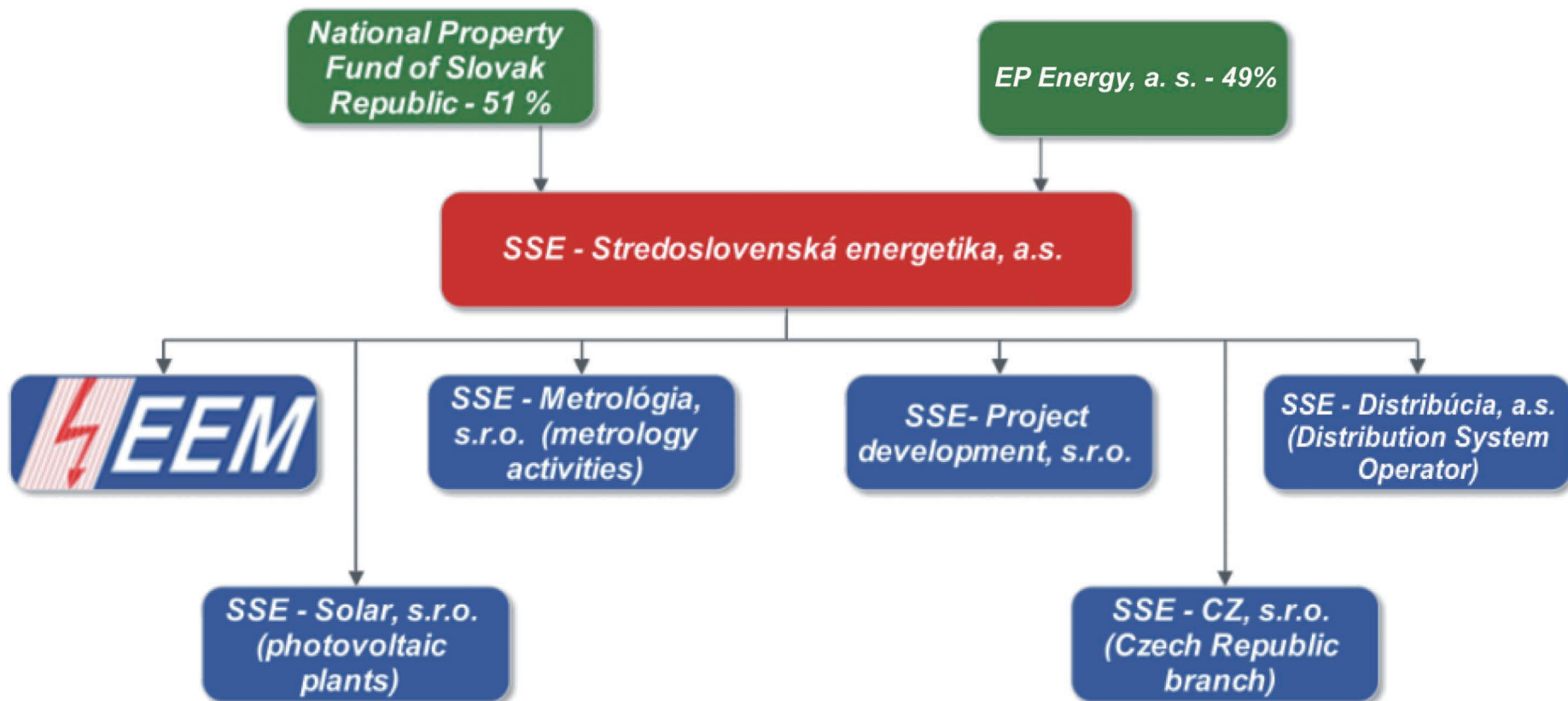


Top quality services in
electric constructions





Part of a larger energy group SSE Group





**Originating in SLOVAKIA,
delivering our services
WORLDWIDE**





With its primer region of operation in central Slovakia

  ENERGY
STREDOSLOVENSKÁ ENERGETIKA

• **Žilina**

Distribution volume
5,5 TWh

712 000 customers



Distribution volume
3,4 TWh

610 000 customers

Košice •

Distribution volume
8,0 TWh

1 mil. customers

• **Bratislava**

**Východoslovenská
energetika**



**Západoslovenská
energetika**





*More than 25 complex
projects abroad*

-  RUSSIA
-  UKRAINE
-  CZECH REPUBLIC
-  IRELAND
-  GREAT BRITAIN
-  FRANCE



Delivering service to our customers

Solar power plants



Distribution system operator



Transmission system operator



Municipalities



State projects



Industrial clients





Well-rounded service providing

EEM services

Engineering
activities

Design and
construction

Production and
assembly of
electrical devices

Professional
consultancy and
maintenance



Bringing electricity elsewhere

**building
reconstruction
project design
engineering activities
own products**

**400kV, 220kV, 110kV, 22kV
overhead lines
cable lines
substations
transformer stations**





Core business

- production, assembly, reconstructions, repairs and maintenance of restricted electrical devices
- expert inspections and expert tests on devices
- engineering and related technical consulting
- building of optical routes
- Live Line Works
- construction of solar power plants
- Safety Coordinator services



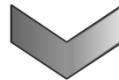


EEM — professional manpower

Customer services



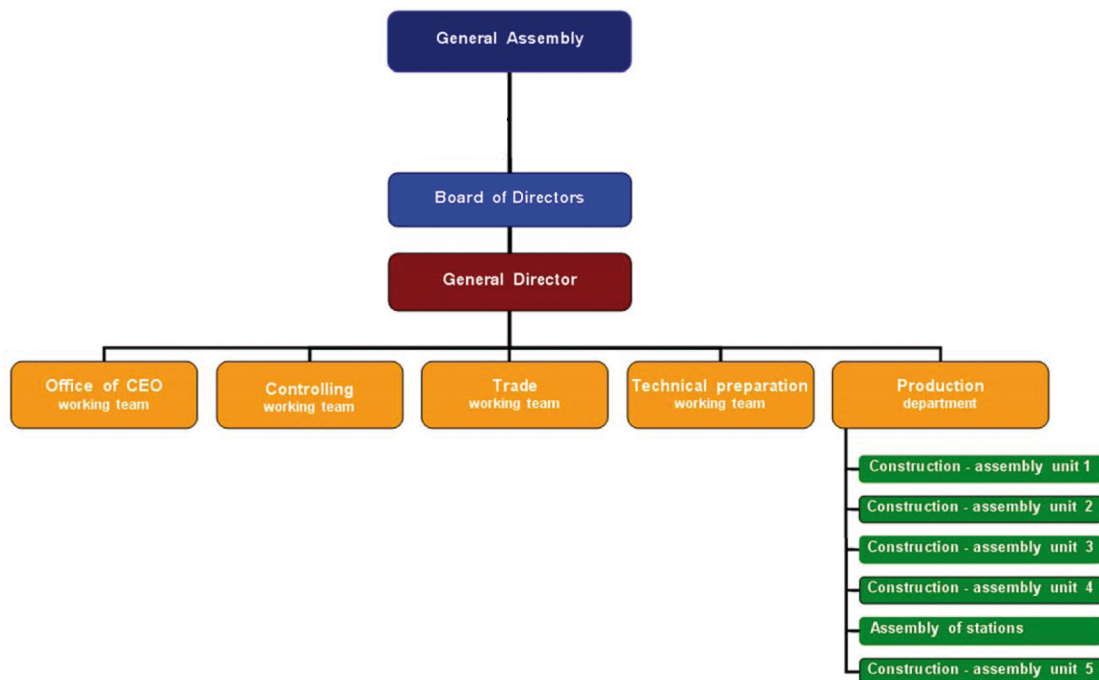
Engineering and design
team

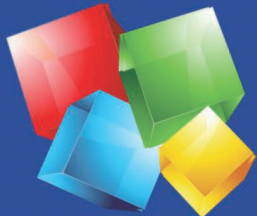


Construction and
assembly working team



Organizational structure of EEM





Years of quality and experience



Certificate

SKQS - Slovak Association for Quality and Management Systems, Ltd.
Alexandra Rudnaya 23, 010 01 Žilina



SKQS confirms on the basis of the audit that:



Elektroenergetické montáže, Ltd.

Pri Rajčianke 2926/10, 010 01 Žilina
and business premises
Švantnerova 9, 974 01 Banská Bystrica
and Zvolenská cesta 9, 974 05 Banská Bystrica

scope of application

**Production, assembly, reconstruction, repairs
and maintenance of reserved electric devices
and their components**

has implemented and maintained the management system
in conformance with the requirements of the international standard

OHSAS 18001:2007

Occupational health and safety management system

Certificate No.: 565-2/17
Scope number: 19, 35
Validity date: 20. 12. 2018
Issue date: 21. 08. 2017
Certification cycle: 21. 12. 2015 - 20. 12. 2018

Ing. Juraj Kotrbánek
Head of Certification Body SKQS

20240_anglicky_1

ISO 9001:
Quality Management System

ISO 14001:
Environmental Management System

OHSAS 18001:
**Occupational Health and Safety
Management System**

**Recertification for Integrated
Management System obtained by
EEM in November 2015.**





Quality policy



QUALITY POLICY

MISSION OF THE COMPANY

We deliver services, products, assembly works, reconstructions, repairs and maintenance of restricted power devices including related complex services to our customers. We put emphasis on:

- ▶ Quality of provided services and requirements of customers
- ▶ Mitigation the negative environmental impacts from our activities in accordance with the principles of environment protection
- ▶ Safety of our activities in maximal extend and related health and safety at work for our employees and contractual partners in compliance with the occupational health and safety at work policy

VISION OF THE COMPANY

We want to become flexible and efficient company, whereby its professional management team will control its activities in provided works and services in order to satisfy the needs and expectations of customers and employees with the target to sustainably increase the company value for the shareholders by means of:

- ▶ Providing support for higher qualification of employees in order to reach high quality of provided services aiming to increase the professionalism, preparation and awareness of employees.
- ▶ Developing bilaterally advantageous long-term partnerships with our subcontractors and business partners, while providing stable position of the company on the market.
- ▶ Team management of all activities of the company based on the efficient process and source management, publishing information and clearly defined responsibilities and competences.
- ▶ Integrated management system of quality, with regular data analysis, systematic management, process management and their interconnections, thus fulfilling the defined objectives and programs of the company.

MANAGEMENT ENGAGEMENT

Top management of Elektroenergetické montáže, a.s. Žilina hereby undertakes to enable availability of all necessary sources for preparation, introduction, sustainable development and improvement of integrated management system for quality, and simultaneously it shall prepare conditions for fulfillment of related legislation requirements and guidelines.

In Žilina, on: 1. 1. 2015


Ing. Peter Blatník
CEO of Elektroenergetické montáže, a.s.

- ▶ **Quality of provided services and requirements of customers**
- ▶ **Providing support for higher qualification of employees**
- ▶ **Developing long-term partnerships**
- ▶ **Team management of all activities based on the efficient process**
- ▶ **Integrated management system of quality**

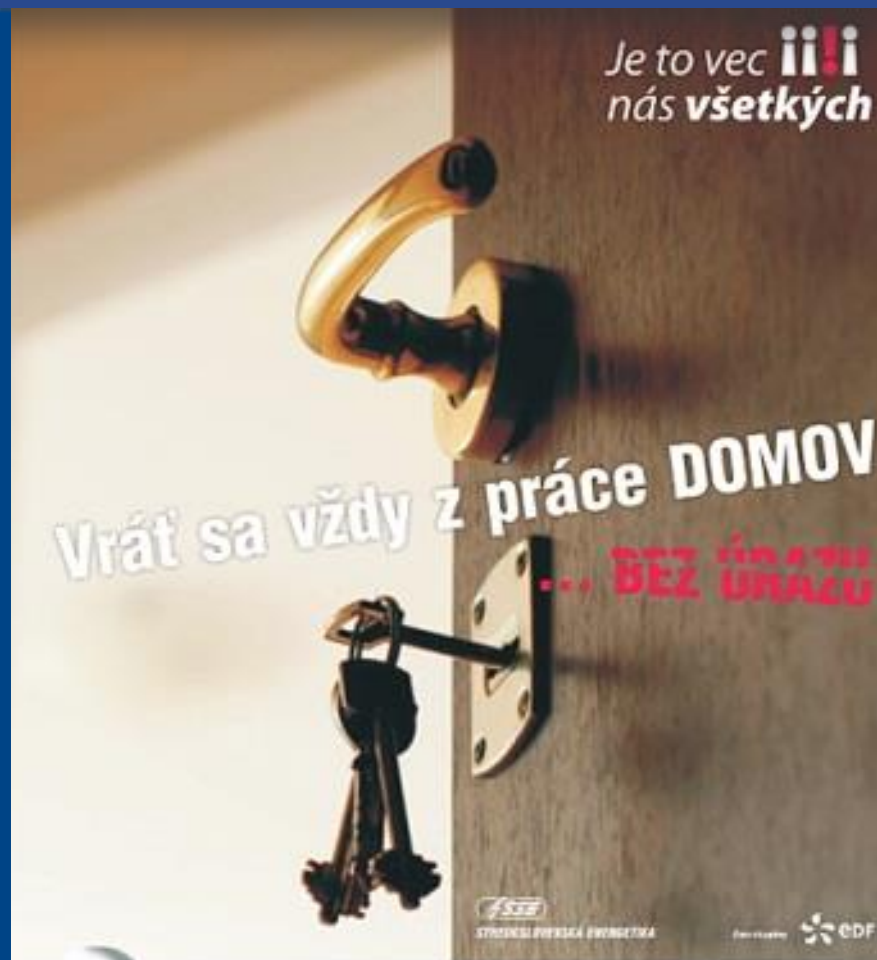




Occupational Health and Safety at Work

Our Safety project

- every year new Safety Action Plan
- participation at European OSHA weeks
- minimum accident rate
- availability of personal protection means
- regular work safety campaigns
- certified under OHSAS 18001





Health and safety policy



Health and safety policy

Elektroenergetické montáže, a.s. (EEM, a.s.), is a subsidiary of company Stredoslovenská energetika, a.s. engaged in the installation, repair, refurbishment of electrical equipment at all voltage levels from 230V to 400kV and the provision of related services complex.

The management of EEM, a.s. considers ensuring the safety and health of its employees, visitors, suppliers, customers and the public as a priority condition of its business activities.

The Commitment of EEM, a.s. management is to:

1. continuously improve and increase the involvement and the level of awareness of employees in health and safety area.
 - ▶ Every work must be carried out safely, no matter how important or urgent it is.
 - ▶ Every employee is responsible for the protection of his / her health and safety and at the same time he / she is obliged to participate adequately also in keeping safety and health protection in his / her vicinity (colleagues, contractors, visitors).
 - ▶ Every employee is active in detecting and reporting dangerous situations and suggests improvements in health and safety area.
 - ▶ Every reported and dealt dangerous situation is treated in order to increase the chance to reduce the occurrence of similar accidents and dangerous situations in the future.
2. provide strong management support and personal involvement in the area of Health and Safety, and this, at all management levels
 - ▶ Each manager is a personal example for his / her surroundings.
 - ▶ Each Manager deals professionally with health and safety in his / her everyday activities.
 - ▶ Each manager is responsible for analyzing and solving all emergencies and providing support for remedies.
3. ensure continuous improvement in health and safety area in order to create and promote a genuine Company Safety Culture.
 - ▶ To inform, educate and raise awareness of all employees and contractors in the health and safety area.
 - ▶ To create clear and understandable rules and guidelines / instructions in order to ensure health and safety in accordance with applicable laws and with other requirements to which the company committed to fulfil.
 - ▶ To perform continuously a risk assessment and after the analysis is done to incorporate the best practices in health and safety area proposed by staff in the field in order to reduce the potential unfavourable effects.
 - ▶ To plan and provide adequate material and financial resources to ensure the health and safety of employees.
 - ▶ To require from each contractor and its employees to be on the same level of health and safety and risk prevention.

The top management of EEM, a.s. is committed to establish adequate resources for documentation, implementation and continuous improvement of the Safety and health management system through improving the level of health and safety culture and risk prevention.

1.1. 2015

In Žilina, on


Ing. Peter Berčík
General Director EEM, a.s.

Commitment:

- ▶ Improve and increase of awareness of employees in health and safety area
- ▶ Management support in HAS
- ▶ Ensure continuous improvement HAS
- ▶ Create and promote a genuine Company Safety Culture





Environmental policy



Environmental policy

Elektroenergetické montáže, a. s. is a subsidiary company of Stredoslovenská energetika, a. s. providing assembly, repair, reconstruction of electrical appliances of all voltage levels and to it related services.


We create technical, economic and social conditions favourable for protection of environment and provision of sustainable development, which allow providing quality services with minimum impact on the environment.

Environmental policy of the companies is in line with sustainable development principles and binding for all employees.

- We value our environment and we consider its protection priority.
- We respect values of the protection of the environment through reliable approach of all our employees.
- In all our activities we accentuate preventive measures in order to minimise their impact on the environment.
- We support use of renewable energy resources and efficient use of energy according to sustainable development principles.
- We apply principle of permanent improvement in the field of environment.
- We regularly evaluate our environmental behaviour, environmental targets and programmes.
- We positively motivate our employees to reach defined environmental targets through the support of environmental awareness.
- We use available sources and possibilities to inform employees, customers, suppliers and other public on our environmental influence.

Top management of companies undertakes to ensure availability of all necessary sources for preparation, implementation, permanent development and improvement of environmental management system and at the same time create conditions for fulfilment of respective legislative requirements and regulations.

In Žitina, on January 1, 2015


Ing. Peter Berčík
General Director EEM, a.s.

- **Protection of environment and sustainable development**
- **Minimization of impact on the environment**
- **Support use of renewable energy resources**
- **Environmental behaviour, targets and programmes**





Our major projects

400 kV projects

- Dlouhé Stráne - Krasikov, CZ
construction of 400kV lines
- Blois, FR
construction of 2x400kV lines
- Lemešany - Krosno, SK-PL
international connection of
2x400kV lines
- Sučany – Varín, SK
construction of 2x400kV lines
- Považská Bystrica – Sverepec,
construction of 400kV line





Our major projects

110 kV projects

Complex reconstruction of 110kV lines in:

- ◆ Horná Ždaňa - Žarnovica
- ◆ Kysucké Nové Mesto – Čadca
- ◆ Lučenec, Rimavská Sobota, Fiľakovo
- ◆ Kráľova Lehota - Štrba
- ◆ Žilina – Varín - Hričov
- ◆ Bystričany - Horná Ždaňa
- ◆ Horný Hričov, HC, Mikšová
- ◆ Ladce – Pravenec





Our major projects

Substations

Complex reconstructions of substations with transformer stations 110kV/22kV in:

- ▣ Žilina
- ▣ Horný Hričov
- ▣ Medzibrod
- ▣ Liptovská Mara
- ▣ Žiar nad Hronom
- ▣ Mokrad'
- ▣ Považská Bystrica
- ▣ Zvolen
- ▣ Lisková





Our major projects

Repairs of substations with transformer stations 110kV/22kV in:

- Tatranská Štrba
- Čadca
- Pravenec
- Handlová
- Hnúšťa
- Vavrečka
- Rajec
- Lietavská Lúčka
- Žilina - Rajčianka
- Dubnica nad Váhom
- Teplička nad Váhom





Our major projects

Solar power plants:

Construction of totally 15 MWp photovoltaic power plants in:

- ▣ Mikušovce
- ▣ Kalinovo
- ▣ Lučenec - Ľadovo
- ▣ Jastrabá





Our major projects

Transfer of power lines at the international motorway and railway construction:

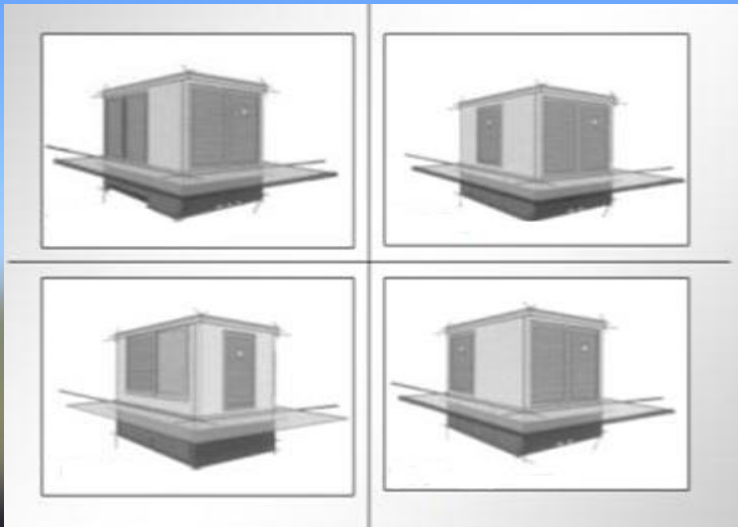
- ❖ Motorway D1 Dubná Skala – Turany, (15 km)
- ❖ Motorway D1 Ladce – Žilina, (50 km)
- ❖ Expressway R1 Nitra – Banská Bystrica, (130 km)
- ❖ Railway Nové Mesto nad Váhom – Beluša, (60 km)





We build our own product

KIOSK transformers



TS1 – TS5 EEM Substations with external control

TS6 – TS8 EEM Substations with internal control



Contact:

Elektroenergetické montáže

Pri Rajčianke 2926/10

010 01 Žilina

Slovak Republic

TEL: +421 41 519 2721

eem@eem.sk

www.eem.sk





Thank you for your attention